

The findings depicted on this drawing have not been verified by the USACE.

The Wetland Lines depicted on this drawing were flagged and surveyed with a Trimble Geo7x GPS with GNSS receiver in the field by Terracon Consultants on 11/8/17 and 11/9/17. Each survey point was at sub-meter accuracy.

Approximate Total Jurisdictional Tributaries: 5,971 Linear Feet  
Approximate Total Jurisdictional Tributaries: 1.16 Acres  
Approximate Total Non-Jurisdictional Pond: 0.73 Acres  
Approximate Total Wetlands: 6.28 Acres  
Approximate Total Uplands: 320.08 Acres  
Approximate Total Site Acreage: 327.52 Acres

Area A

Area B

Legend

Approximate Site Boundary

Upland Data Point

Wetland Data Point

Non-Jurisdictional Linear Feature

Jurisdictional Tributary CL

Non-Jurisdictional Pond

Jurisdictional Tributary

Jurisdictional Wetland

N

0

400

800

1,600

Feet

Esri, HERE, DeLorme, MapmyIndia, © OpenStreetMap contributors, Source: Esri, DigitalGlobe, GeoEye, Earthstar Geographics, CNES/Airbus DS, USDA, USGS, AeroGRID, IGN, and the GIS User Community

Project No. EN177429	<div>Terracon</div> <div>1450 Fifth Street West N Charleston, SC 29405 Phone: 843.884.1234 Fax: 843.884.9234</div>	Approximate Depiction of Aquatic Resources Map		EXHIBIT NO.  A
PM: JTM		Friendship Industrial Park		
Drawn By: JTM		Laurens County		
Date: 11/13/2017		South Carolina		



The findings depicted on this drawing have not been verified by the USACE.

The Wetland Lines depicted on this drawing were flagged and surveyed with a Trimble Geo7x GPS with GNSS receiver in the field by Terracon Consultants on 11/8/17 and 11/9/17. Each survey point was at sub-meter accuracy.

Approximate Total Jurisdictional Tributaries: 5,971 Linear Feet  
Approximate Total Jurisdictional Tributaries: 1.16 Acres  
Approximate Total Non-Jurisdictional Pond: 0.73 Acres  
Approximate Total Wetlands: 6.28 Acres  
Approximate Total Uplands: 320.08 Acres  
Approximate Total Site Acreage: 327.52 Acres

Area A

DP1

Jurisdictional Tributary 6  
~430 Linear Feet

Non-Jurisdictional  
Linear Feature 3

Jurisdictional Tributary 7  
~180 Linear Feet

Jurisdictional Tributary 8  
~485 Linear Feet

Old Dairy Rd.

Non-Jurisdictional  
Pond 1  
~0.73 Acres

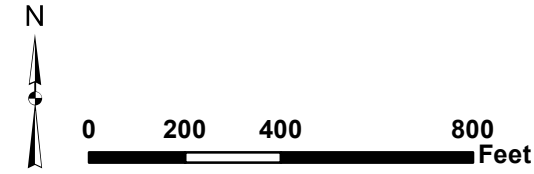
DP2

DP3

Legend

- Approximate Site Boundary
- Upland Data Point
- Wetland Data Point
- Non-Jurisdictional Linear Feature
- Jurisdictional Tributary CL
- Non-Jurisdictional Pond
- Jurisdictional Tributary

Esri, HERE, DeLorme, MapmyIndia, © OpenStreetMap contributors, Source: Esri, DigitalGlobe, GeoEye, Earthstar Geographics, CNES/Airbus DS, USDA, USGS, AeroGRID, IGN, and the GIS User Community



Project No.	EN177429
PM:	JTM
Drawn By:	JTM
Date:	11/13/2017

1450 Fifth Street West N Charleston, SC 29405  
Phone: 843.884.1234 Fax: 843.884.9234

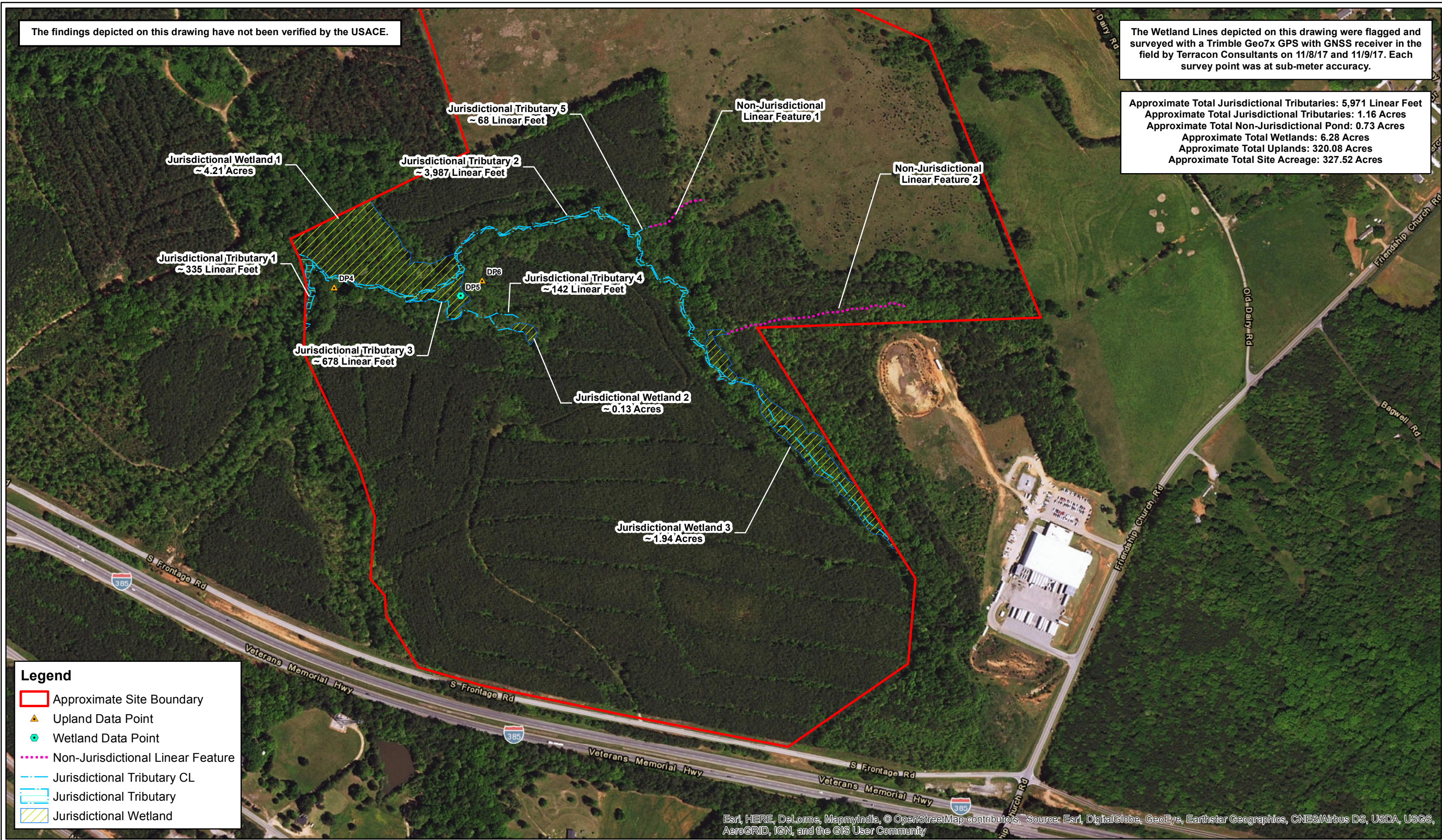
Approximate Depiction of Aquatic Resources Map		EXHIBIT NO.
Friendship Industrial Park		A-A
Laurens County	South Carolina	



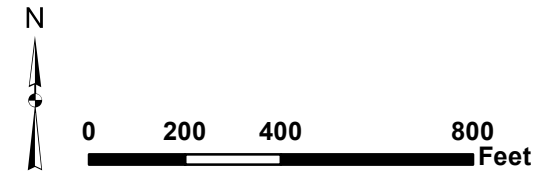
The findings depicted on this drawing have not been verified by the USACE.

The Wetland Lines depicted on this drawing were flagged and surveyed with a Trimble Geo7x GPS with GNSS receiver in the field by Terracon Consultants on 11/8/17 and 11/9/17. Each survey point was at sub-meter accuracy.

Approximate Total Jurisdictional Tributaries: 5,971 Linear Feet  
Approximate Total Jurisdictional Tributaries: 1.16 Acres  
Approximate Total Non-Jurisdictional Pond: 0.73 Acres  
Approximate Total Wetlands: 6.28 Acres  
Approximate Total Uplands: 320.08 Acres  
Approximate Total Site Acreage: 327.52 Acres



- Legend**
- Approximate Site Boundary
  - Upland Data Point
  - Wetland Data Point
  - Non-Jurisdictional Linear Feature
  - Jurisdictional Tributary CL
  - Jurisdictional Tributary
  - Jurisdictional Wetland



Esri, HERE, DeLorme, MapmyIndia, © OpenStreetMap contributors, Source: Esri, DigitalGlobe, GeoEye, Earthstar Geographics, CNES/Airbus DS, USDA, USGS, AeroGRID, IGN, and the GIS User Community

Project No.	EN177429
PM:	JTM
Drawn By:	JTM
Date:	11/13/2017

1450 Fifth Street West N Charleston, SC 29405  
Phone: 843.884.1234 Fax: 843.884.9234

Approximate Depiction of Aquatic Resources Map		EXHIBIT NO.
Friendship Industrial Park		A-B
Laurens County	South Carolina	